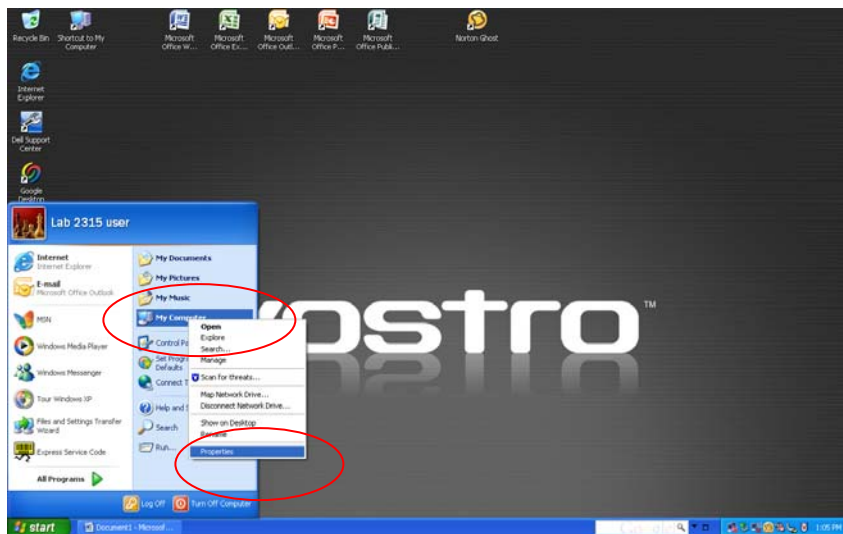


## Xerox Phaser 3100MFP Driver Update (XP only)

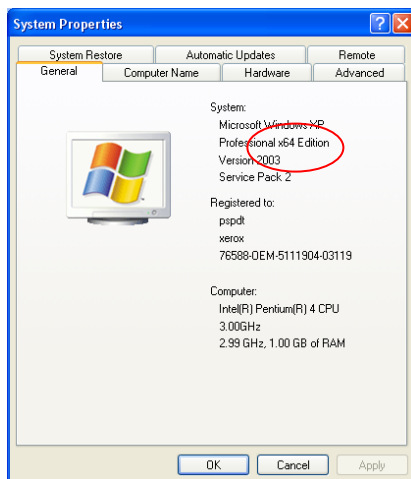
1. If your print driver CD has been previously loaded skip this step. If you want the full functionality of the Phaser 3100MFP insure that the CD that came with your printer is loaded.
2. Down load the file from the net, store it on the PC and extract/unzip the files. Remembering the storage/unzip location.

The file name is "LFXv2\_Xerox\_GDI\_20080812\_WHQL.zip"

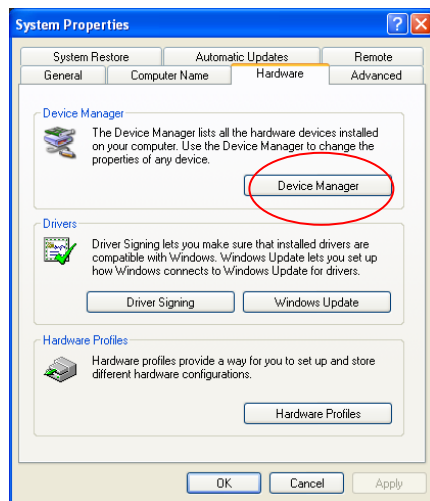
3. Connect the printer to the PC using the USB cable.
4. Determine the PC processor speed; 32 bit or 64 bit, by selecting "Start" and Right mouse click on "My Computer" and select "Properties"



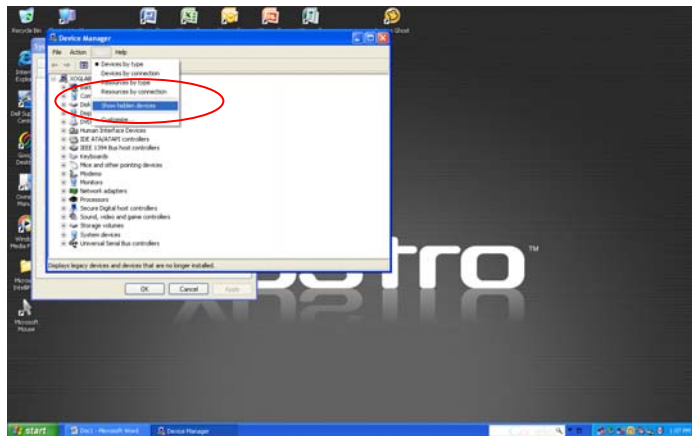
5. Under "General" tab find System if you see a "64" you have a 64 bit processor , if you do not see a "64" then you have a 32 bit processor.



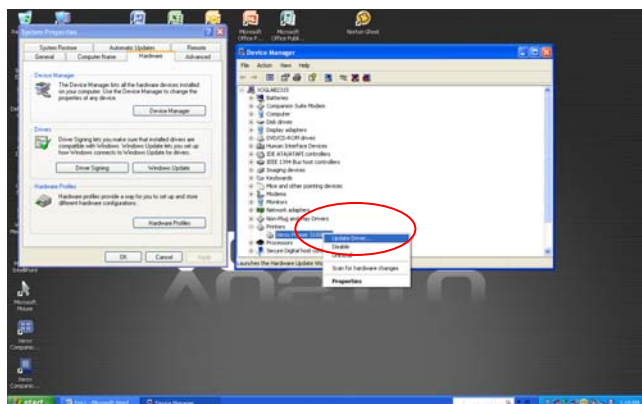
6. Select the “Hardware” tab, then Select “Device Manger”



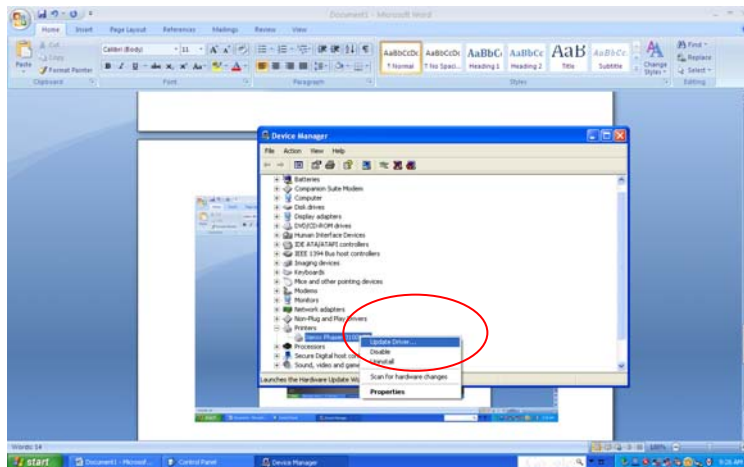
7. Under “View” select “Show Hidden Devices”



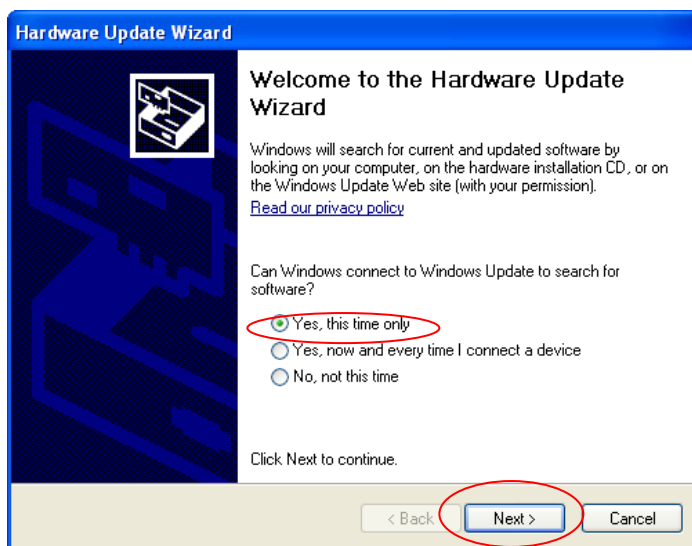
8. Open the Printer icon and Highlight “Xerox Phaser 3100MFP”



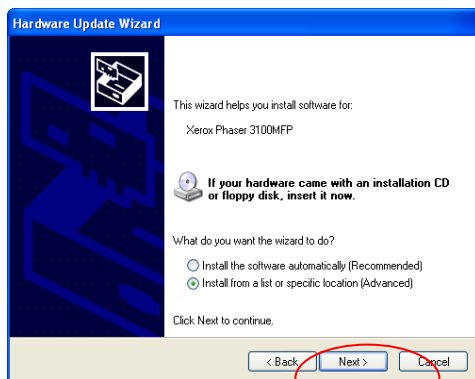
9. Right mouse click on “Xerox Phaser 3100” and Select “Update Driver”



10. Select “Yes, This time only” then select “Next”.

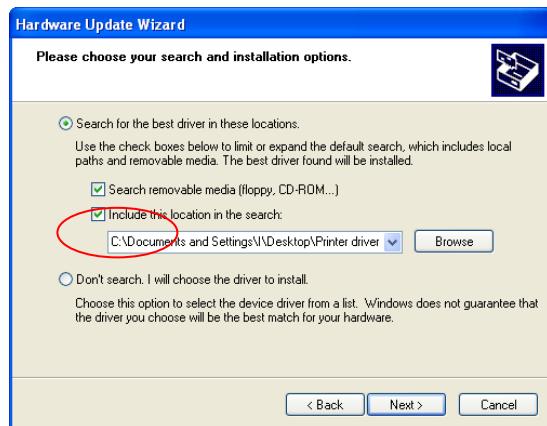


11. Select “Install from a list or or specific location ( Advanced)” and select “Next”



12. Check “Include this location in the search” then Browse.

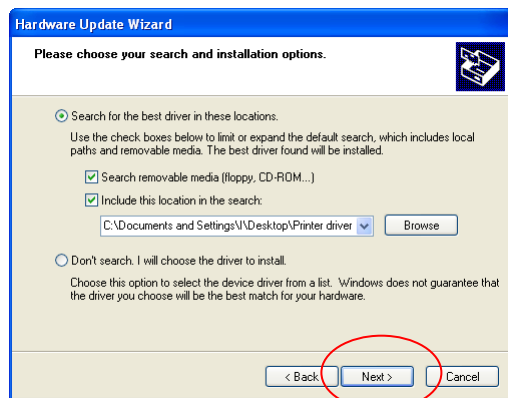
13. Browse to the location you remembered in Step2.



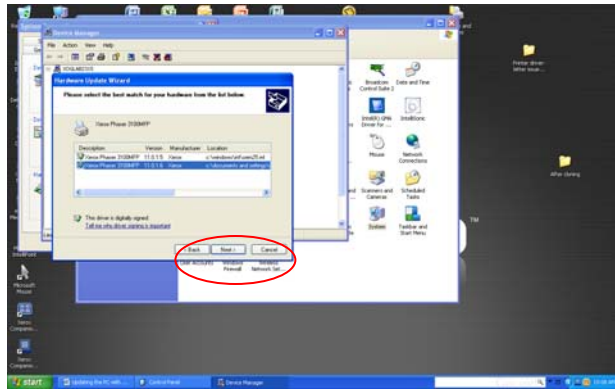
14. Open the “LFXv2\_Xerox\_GDI\_20080812\_WHQL” folder then Open the GDI folder. If you have an 32 bit Processor Select “i386” folder and if you have a 64 bit processor select “amd64” folder. Select “OK”



15. Select “Next”.



16. Select "Next"



17. Select "Finish".

